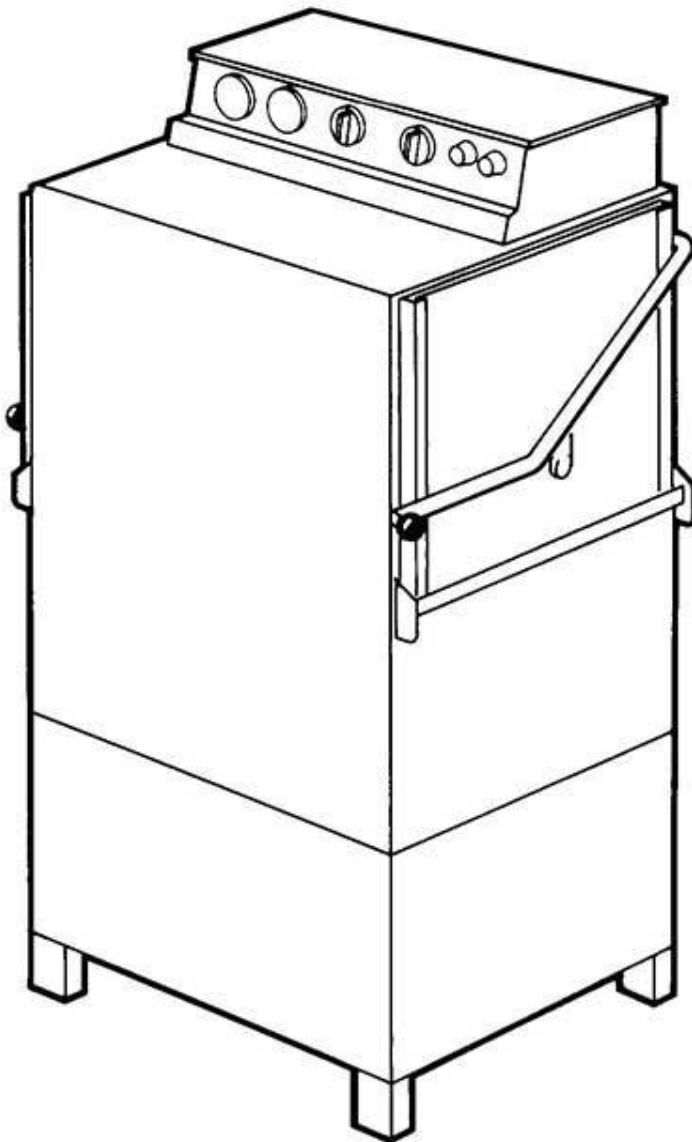


winterhalter

Spare Parts List GS 41/3

Revised 10/04

Part no. 89001388



Summary

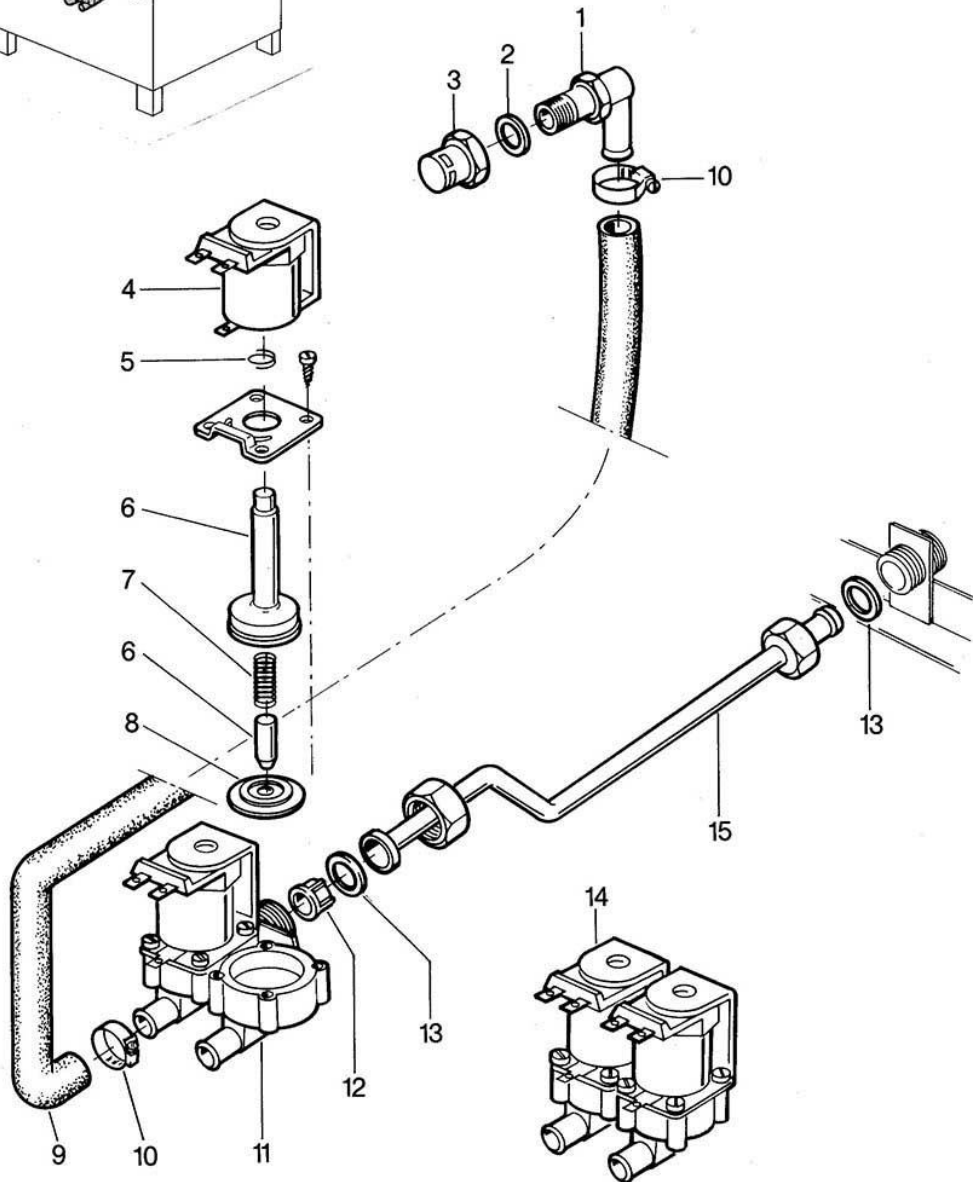
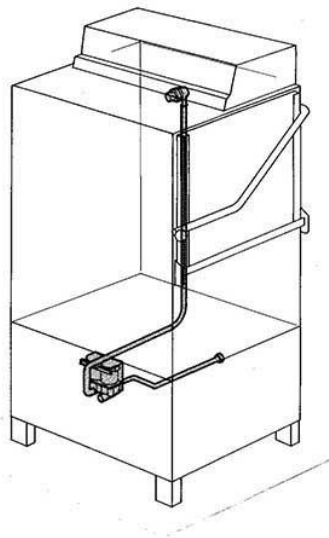
Water inlet and connections	Page 1 and 2
Water drain, tank heating and Mediamat	Page 3 and 4
Wash system I	Page 5 and 6
Wash system II	Page 7 and 8
Rinsing I	Page 9 and 10
Rinsing II	Page 11 and 12
Door	Page 13 and 14
Sheathing, base frame and container	Page 15 and 16
Electrical parts I	Page 17 and 18
Electrical parts II	Page 19 and 20
Electrical parts III	Page 21 and 22

Racks and accessories see separate list.

Parts that have the note " Part made to order only!" are not in stock. This parts are made specially for your order and have a delivery time. They are not returnable.

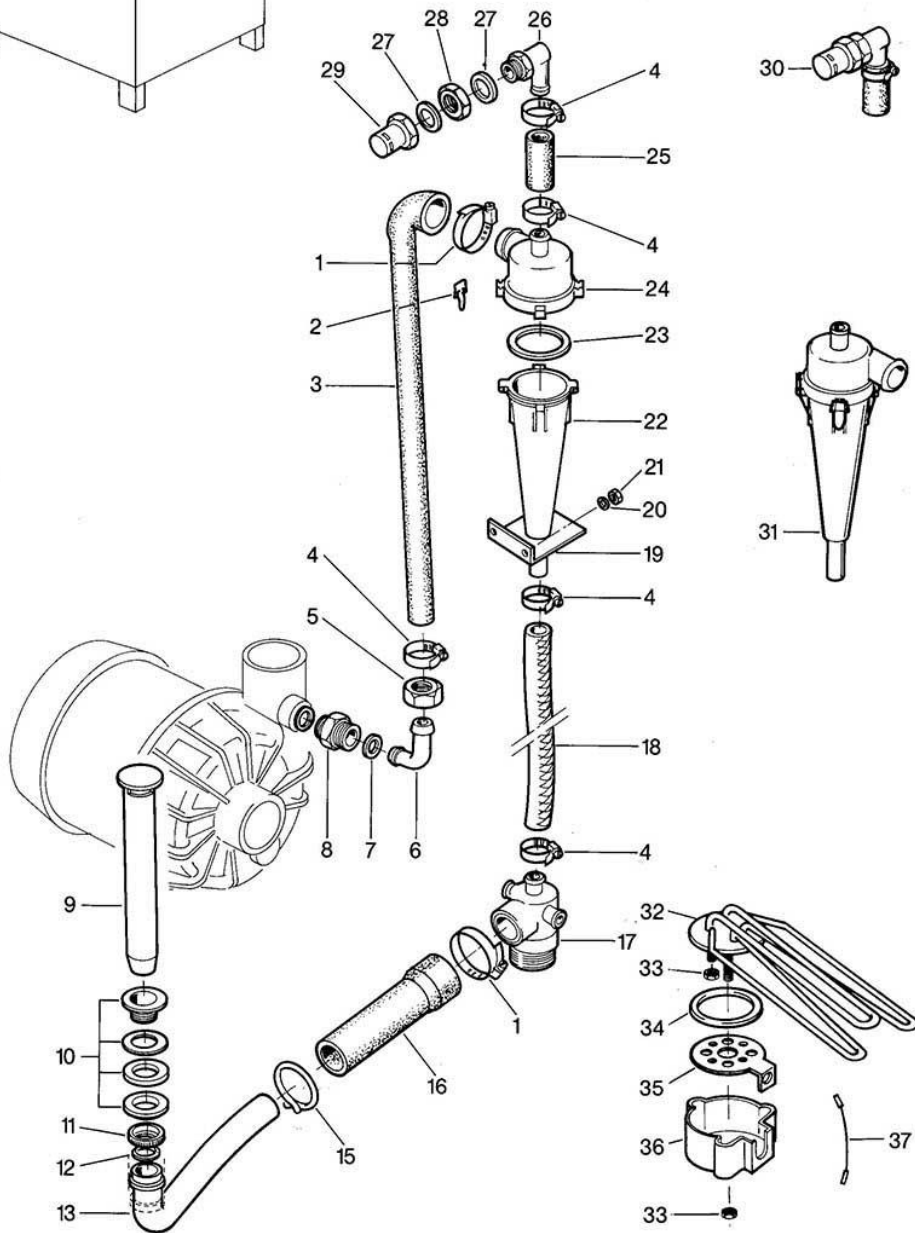
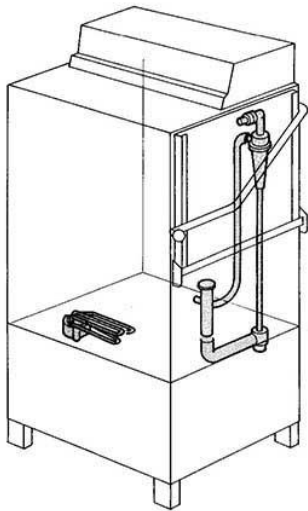
GS 41/3

Wasserzulauf und Wassereinlauf
Water inlet and connections
Alimentation d'eau et arrivée de l'eau



GS 41/3

Wasserablauf, Tankheizung und Mediamat
Water drain, tank heating and Mediamat
Ecoulement d'eau, chauffage de la cuve
et récipient

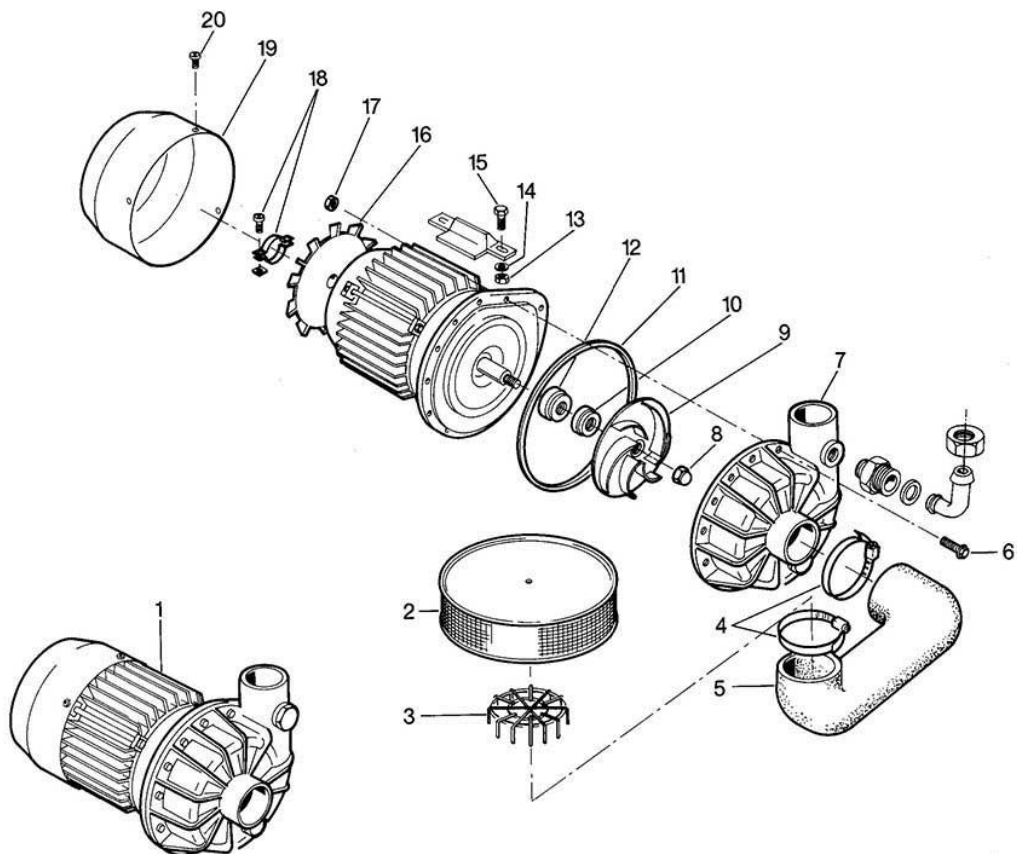
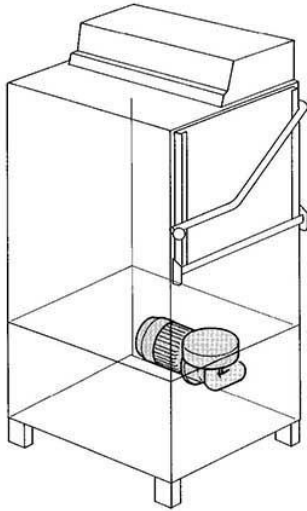


GS 41/3
Water drain, tank heating and Mediamat

Pos.	Designation	Part no.	Notes
1	Hose clip \varnothing 32 - \varnothing 52	28 02 309	
2	End piece clip	28 04 041	
3	Reducing hose \varnothing 30 x \varnothing 16 x 550	61002390	
4	Hose clip \varnothing 20 - \varnothing 30	28 02 109	
5	Coupling nut 3/4" BSP x 21	29 07 203	
6	Mediamat connection elbow	29 06 524	
7	Seal \varnothing 24 x \varnothing 19,5 x 1,5	27 09 010	
8	Mediamat connection nipple 1/2" x 3/4" BSP x 32	30 11 502	
9	Stand pipe 185 overflow height	61004192	
10	Drain outlet connection	29 04 202	
11	Knurled coupling nut 1 1/4" BSP	29 07 209	
12	Fibre washer \varnothing 38 x \varnothing 30 x 2	27 09 031	
13	Siphon 1 1/4" BSP	55 05 049	
14			
15	Hose clip	28 02 111	
16	Reducing hose \varnothing 40 x \varnothing 32 x 200	40 03 024	
17	Mediamat drain	35 01 080	
18	Hose piece \varnothing 19 x 4 x 340	40 01 016	per metre
19	Supporting angle for Mediamat	61000658	
20	Washer \varnothing 4,3	22 02 202	
21	Hexagon nut M 4	21 01 302	
22	Accelerator	35 01 035	
23	O-ring \varnothing 51 x 3	27 07 043	
24	Head piece inlet \varnothing 30	35 01 124	
25	Hose piece \varnothing 18 x 3,5 x 75	40 02 025	per metre
26	Mediamat connection elbow 1/2"BSPx20x \varnothing 64,5x42		Relaced by pos. 30
27	Fibre washer \varnothing 28 x \varnothing 21 x 2,0	27 09 011	Old type
n.p.	o-ring	27 07 031	New type
n.p.	Thrust ring	62002943	New type
28	Bihexagonal nut G 1/2"	61004432	New type
29	cover	61004430	New type
30	Mediamat inlet cpl.	55 31 001	
31	Mediamat cpl.	55 27 040	
32	Heating element angled 6 kW 220/380 V	31 03 025	special voltage on request
n.p.	Heating element angled 6 kW 240/420 V	31 03 042	
33	Hexagon nut M 5	21 01 303	
34	O-ring \varnothing 46 x 6	27 07 069	
35	Heating element flange	31 03 067	
36	Cover for heating element	31 03 014	
37	Link wire	31 23 088	

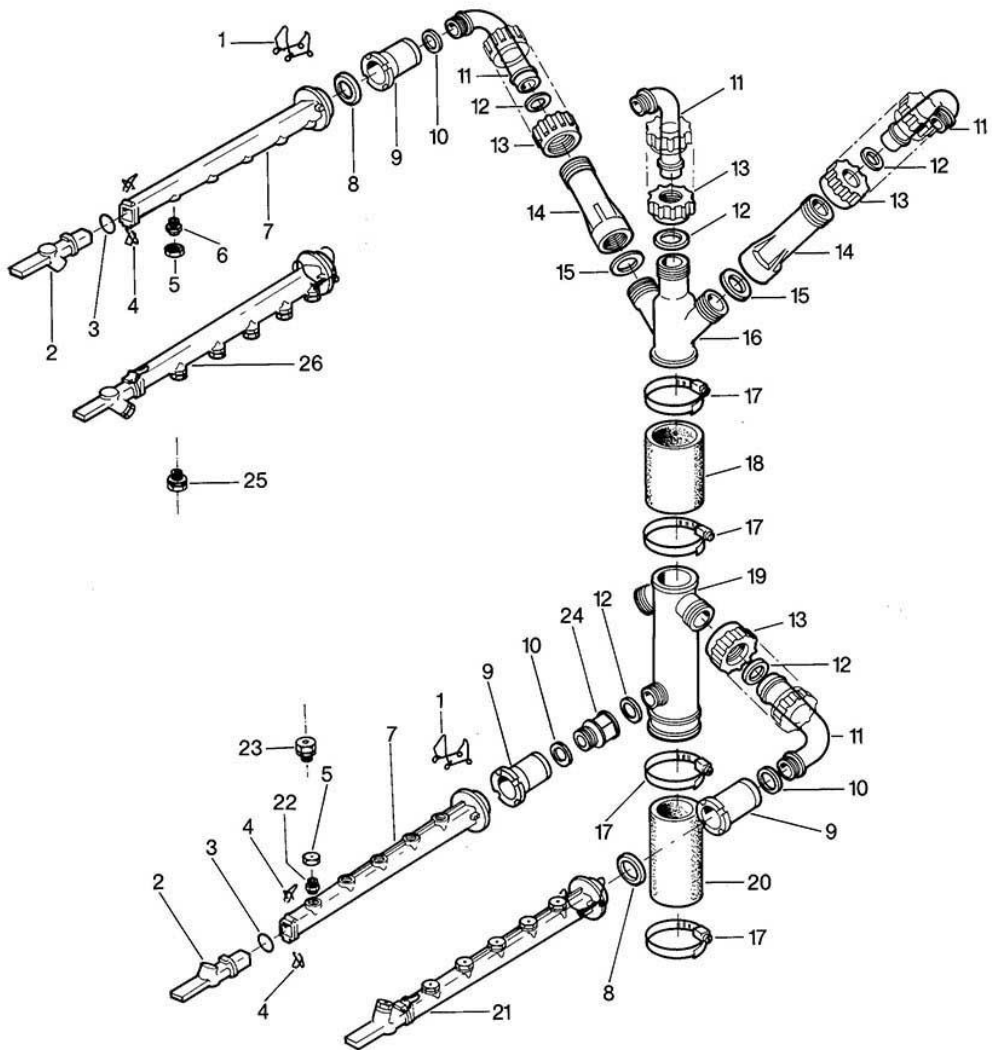
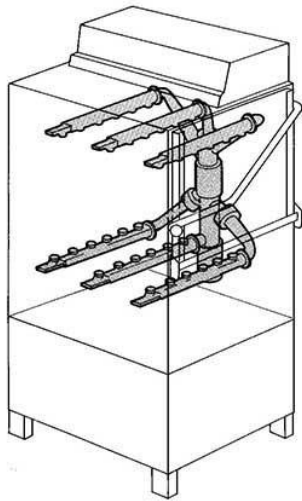
GS 41/3

Waschsystem I
Wash system I
Système de lavage I



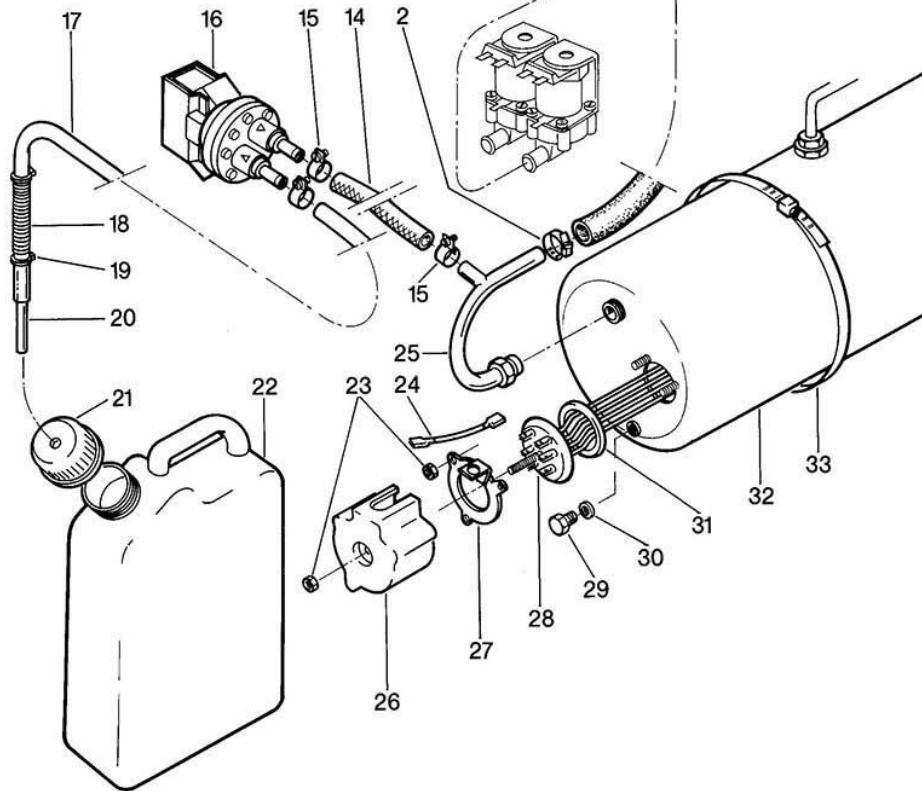
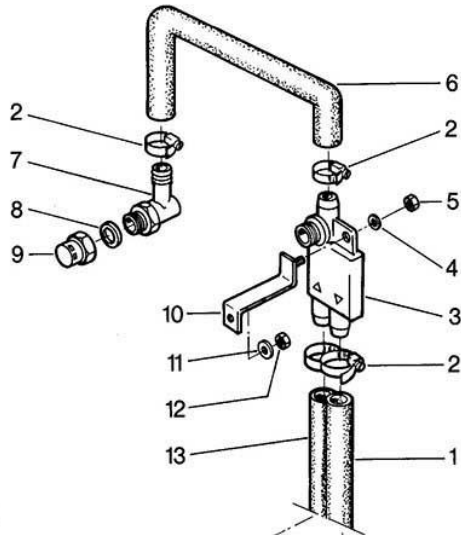
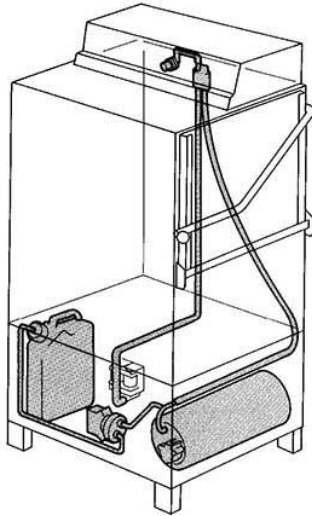
GS 41/3

Waschsystem II Wash system II Système de lavage II



GS 41/3

Nachspülung I
Rinsing I
Rinçage I

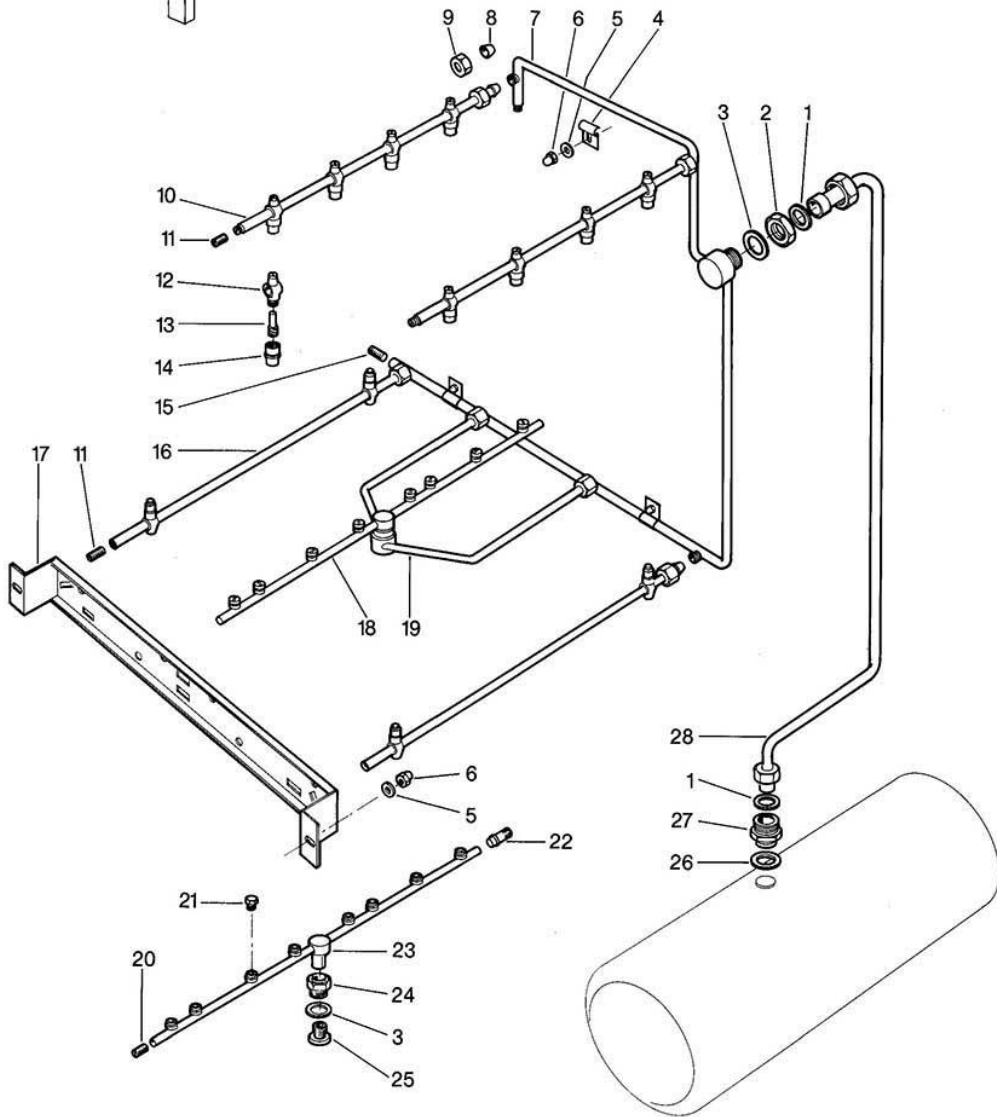
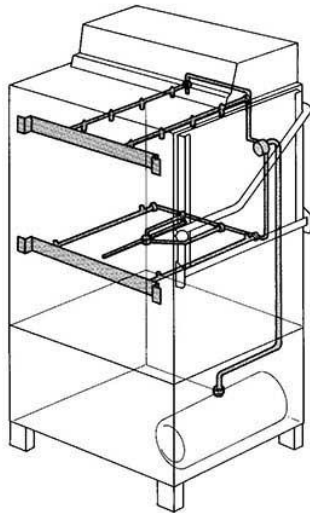


GS 41/3
Rinsing I

Pos.	Designation	Part no.	Notes
1	Hose piece \varnothing 13 x 3,5 x 1345	40 02 029	per metre
2	Hose clip \varnothing 14 - \varnothing 24 x 9	28 02 108	
3	Backflow-restrictor top	35 01 193	
4	Washer \varnothing 6,4	22 01 302	
5	Hexagon nut M 6	21 01 304	
6	Shaped hose \varnothing 13 x 4	40 03 052	
7	Connection 1/2" BSP x 14,5	35 01 156	
8	Fibre washer \varnothing 28 x \varnothing 21 x 2,0	27 09 011	
n.p.	o-ring	27 07 031	New type
9	Water inlet 1/2" BSP	61005339	
10	Fixing angle	55 04 054	
11	Washer \varnothing 4,3	22 02 302	
12	Hexagon nut M 4	21 01 302	
13	Tank inlet hose	40 03 051	
14	Hose piece \varnothing 5 x 3 x 120	40 01 024	per metre
15	Wire hose clip	28 02 348	
16	Dispenser ELT 10	55 28 278	ELT 20
17	Hose \varnothing 6 x 1,5 x 1250	40 01 024	per metre
18	Retaining support 120 x \varnothing 19,2 x \varnothing 0,8	28 04 014	
19	Hose clip	28 02 348	
20	Suction pipe \varnothing 6 x 1 x 150	61000693	
21	Screw cap	35 02 023	
22	Detergent container 3 litre	35 02 004	
23	Hexagon nut M 5	21 01 303	
24	Link wire	31 23 088	
25	Boiler inlet elbow cpl.	55 09 054	
26	Cover for heating element	31 03 014	
27	Clamping plate cpl.	55 19 018	
28	Heat. element cranked 6 kW 220/380 V	31 03 017	special voltage on request
n.p.	Heat. element cranked 6 kW 240/420 V	31 03 043	
29	Hexagon screw M 10 x 14	20 01 352	
30	Fibre washer \varnothing 18 x \varnothing 10 x 1,5	27 03 003	
31	O-ring \varnothing 46 x 6	27 07 069	
32	Rinse boiler cpl. 2 holes 6 + 12 kw	55 12 032	
33	Hose clip \varnothing 182 - \varnothing 202	28 02 121	

GS 41/3

Nachspülung II Rinsing II Rinçage II

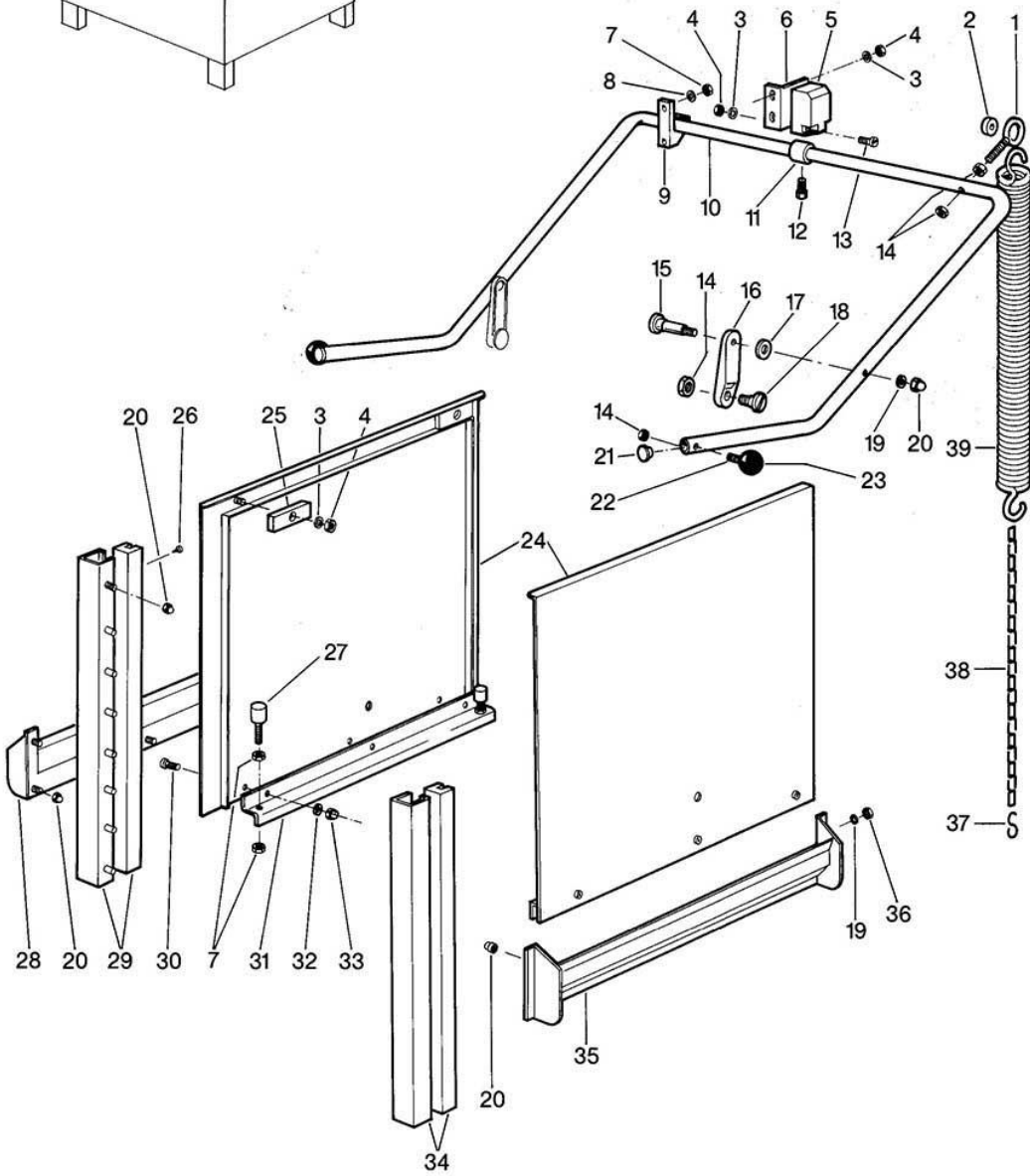
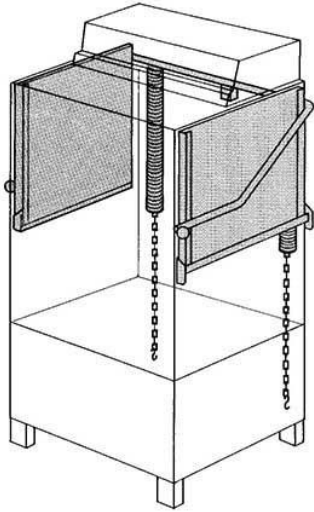


GS 41/3
Rinsing II

Pos.	Designation	Part no.	Notes
1	Fibre washer \varnothing 24 x \varnothing 19,5 x 1,5	27 09 010	
2	Locking nut narrow 3/4" BSP	61002626	
3	Fibre washer \varnothing 34 x \varnothing 27 x 2,0	27 09 025	
4	Pipe clamp	55 04 057	
5	Washer \varnothing 4,3	22 02 302	
6	Dome head nut M 4	21 10 302	
7	Rinse manifold cpl.	61001713	
8	Olive \varnothing 10,2	29 07 500	
9	Coupling nut 3/8" BSP x \varnothing 10,2	29 07 200	
10	Rinse arm cpl. top	55 10 015	583 long
11	Grub-screw M 9 x 40	20 30 502	
12	Rinse jet base cpl.	55 10 008	with screw and nut
13	Rinse jet swirl	65002764	
14	Rinse jet cap	65002765	
15	Grub-screw M 11 x 1 x 20	20 30 503	
16	Rinse arm bottom cpl.	80000128	with 2 jets outside
17	Rinse arm support cpl.	61001725	top and bottom
n.p.	Wash arm support top cpl.	61001018	Part made to order only!
18	Revolving arm cpl.	55 10 091	with jets
19	Revolving arm support cpl.	61002679	
20	Grub-screw M 9 x 0,75 x 6 lg.	29 10 238	
21	Flat rinse jet	29 10 312	
22	Grub-screw M 9 x 0,75 x 12 lg.	29 10 234	with O-ring 27 07 042
23	Revolving arm 530 long	55 10 091	
24	Revolving arm bush 3/4" BSP x 24,5	35 01 161	
25	Revolving arm screw	20 19 204	
26	Fibre washer \varnothing 28 x \varnothing 21 x 2	27 09 011	
27	Reducing nipple 3/4" BSP x 1/2" BSP	61003430	
28	Rinse connection cpl.	61004984	Hose set

GS 41/3

Türe
Door
Porte

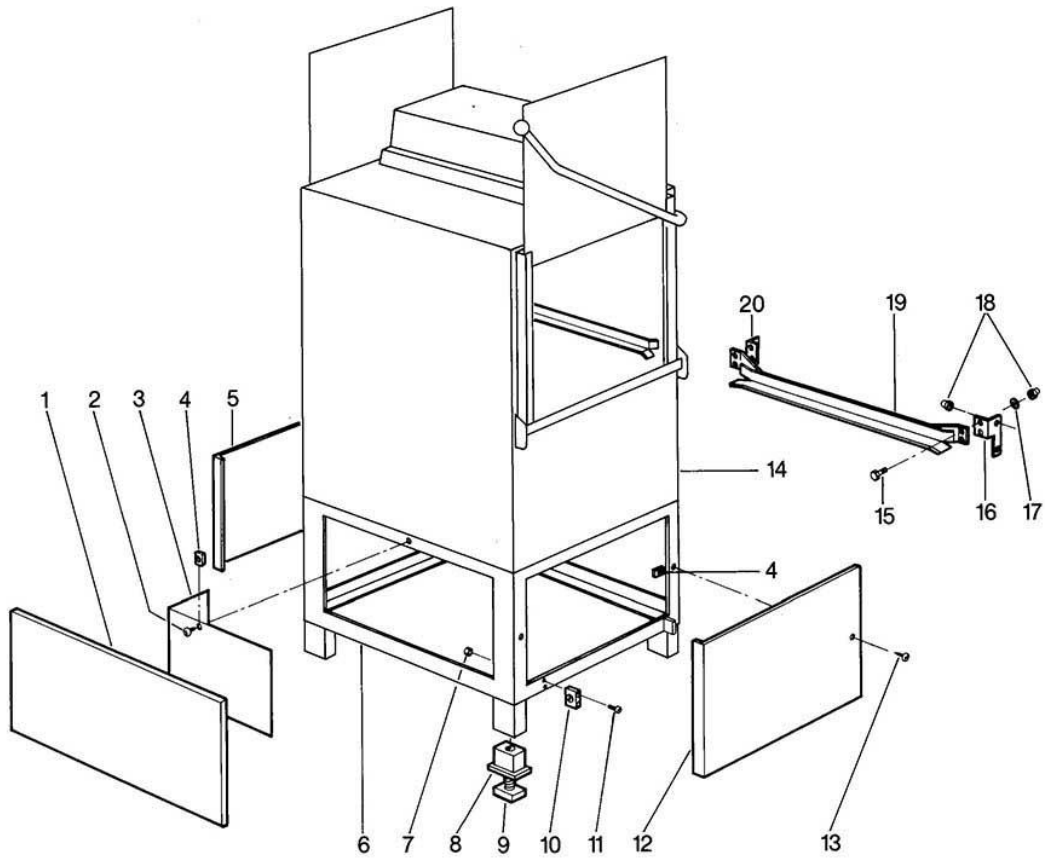
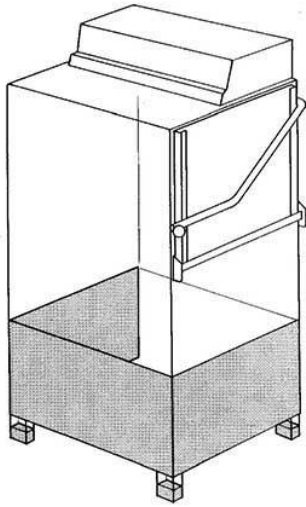


GS 41/3
Door

Pos.	Designation	Part no.	Notes
1	Spring suspension M 8 x 80	55 27 180	
2	Spacer \varnothing 5,3 x \varnothing 12 x 7	22 08 513	omitted since /792
3	Washer \varnothing 4,3	22 02 302	
4	Hexagon nut M 4	21 01 302	
5	Limit switch	80003235	
6	Limit switch support	61000733	
7	Hexagon nut M 6	21 01 304	
8	Washer \varnothing 6,4	22 01 302	
9	Door handle bearing	35 01 066	
10	Door handle	55 24 015	without parts Part made to order only!
11	Set collar \varnothing 36 x \varnothing 23	23 05 002	
12	Hexagon screw M 6 x 12	20 02 002	DIN 564
13	Pan head screw M 4 x 25	20 10 215	
14	Hexagon nut M 8	21 01 305	
15	Door lever lense screw M 5 x 36	20 19 201	
16	Door lever	35 01 067	
17	Washer \varnothing 8,4	22 01 303	
18	Door lever screw M 8 x 10	20 18 262	
19	Washer \varnothing 5,3	22 01 300	
20	Dome head nut M 5	21 10 303	
21	Locking cap	35 03 004	
22	Grub-screw M 8 x 25	20 30 002	
23	Door knob \varnothing 40; M 8	28 05 012	
24	Door cpl.	55 15 026	
n.p.	Sealing rail	55 15 147	Between door and case
25	Door stop	35 01 162	
26	Sheet metal screw 2,9 x 9,5	20 20 309	
27	Rubber buffer \varnothing 20 x 25; M 6 x 18	40 06 004	
28	Gutter left cpl.	55 15 022	
29	Sliding rail left cpl.	55 15 040	
30	Lens head countersunk screw M 4 x 8	20 10 310	
31	Splash guard cpl.	55 15 024	
32	Spring washer B 4	23 03 304	
33	Dome head nut M 4	21 10 302	
34	Sliding rail right cpl.	55 15 039	
35	Gutter right cpl.	55 15 021	
36	Hexagon nut M 5	21 01 303	
37	S-hook	28 15 009	
38	Link chain 530 long	28 15 008	
39	Tension spring	28 04 001	

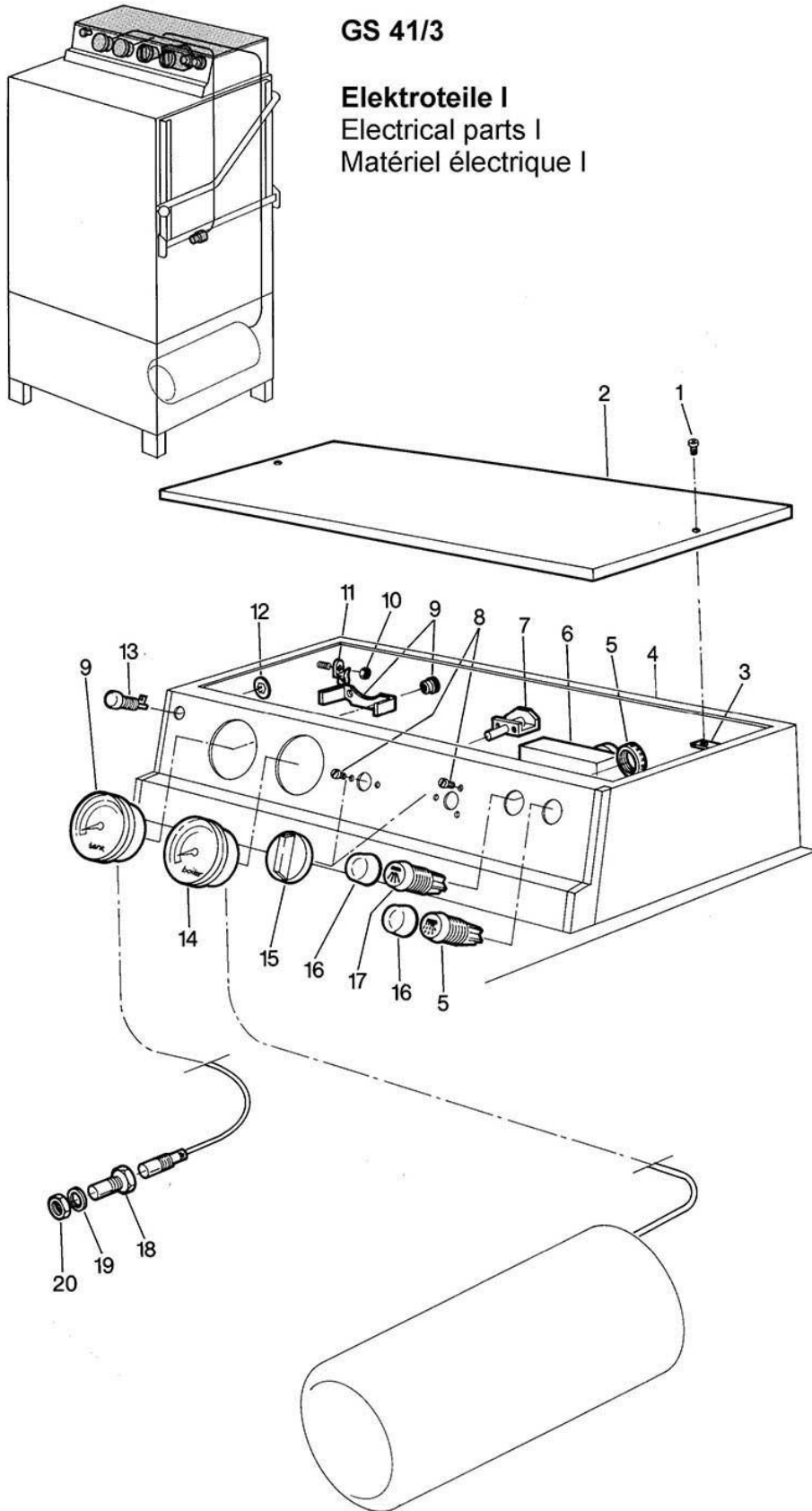
GS 41/3

Verkleidung, Untergestell und Behälter
Sheathing, base frame and container
Habillage, châssis et récipient



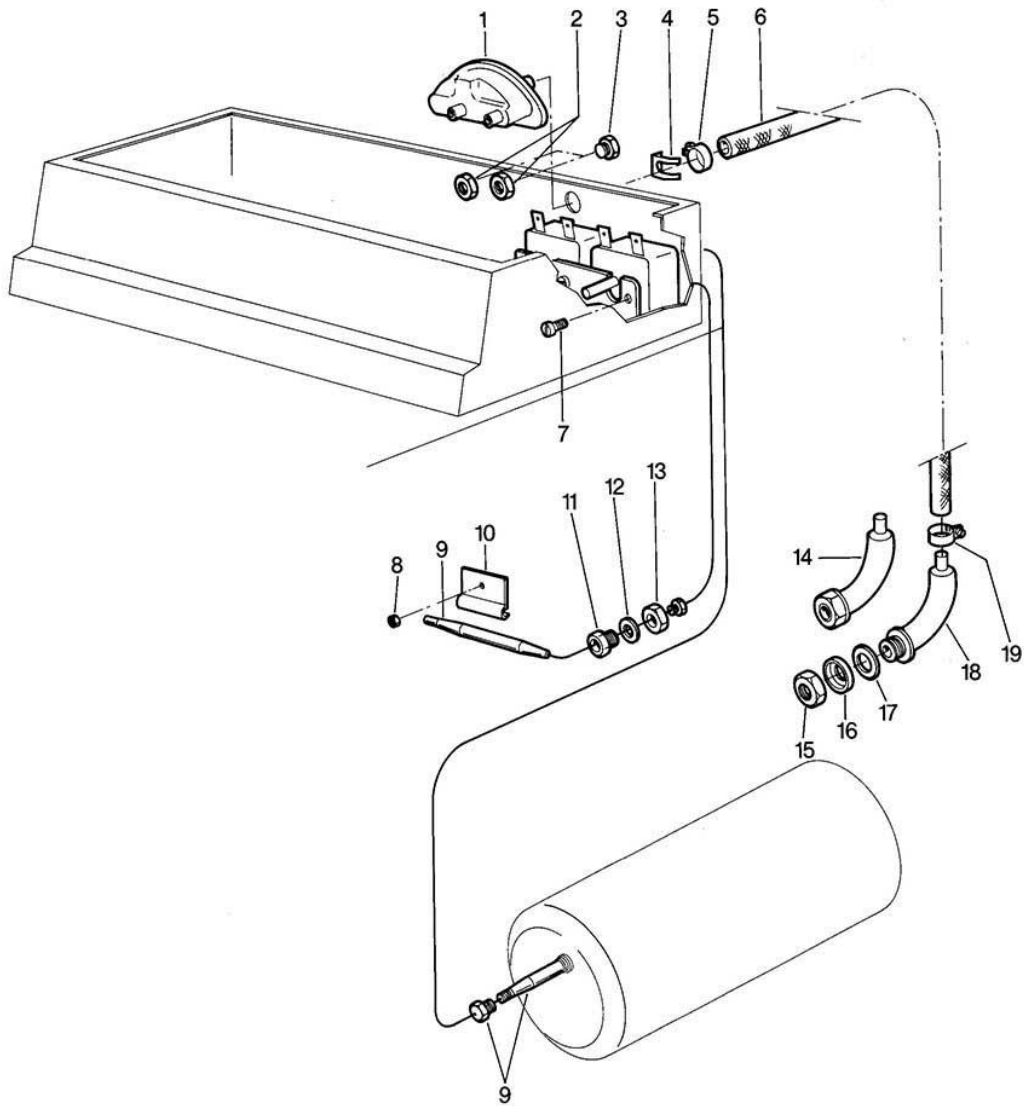
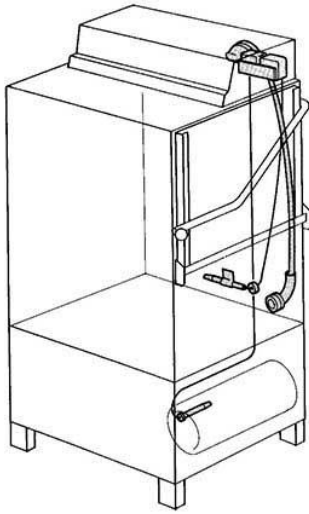
GS 41/3

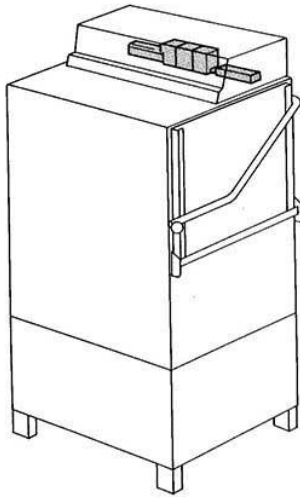
Elektroteile I
Electrical parts I
Matériel électrique I



GS 41/3

Elektroteile II
Electrical parts II
Matériel électrique II





GS 41/3

Elektroteile III
Electrical parts III
Matériel électrique III

